

# Little Greene®

— PAINT & PAPER —



# Contents

Our Heritage	4–5
Colours with a Story to Tell	6–7
Choosing Colour	8–9
Choosing Finishes	10–14
Exteriors	15
Preparing Walls, Woodwork & Metalwork	16
Primer	17
Usage Guidelines	18

## **Wallpaper**

Papers with a Story to Tell	20
Inspired by Historic Archives	20
Colour Matched Papers	21
300 Years of Wallpaper Production	22
Early Wallcoverings	22
National Trust Papers I	23–25
National Trust Papers II	26–28
National Trust Papers III	29–31
Index by Collection	32–34
Index by Design Name	35
Wallpaper Paste	35



# Welcome to Little Greene

Little Greene's paints and wallpapers represent 300 years of decorative history.

Referencing the key periods of interior design, from the 17th century to the late 20th century, we're committed to an ongoing research programme, and are proud to breathe new life into the best colours and patterns from the past.

A family-run business, with our own factory nestled in the foothills of Mount Snowdon in North Wales, we are the only British paint maker still producing a complete range of traditional and modern finishes.

Our portfolio includes interior and exterior finishes, floor paint and a signature range of hard-wearing 'Intelligent Paints', especially designed for today's busy homes.

Our paints are accompanied by hundreds of complementary wallpapers; authentic historic designs that we redraw and coordinate with our paint colours for the design-led 21st century interior.

We hope the inspiration and information in the following pages will help you to enjoy bringing these beautiful colours and high-quality paint finishes to your home.

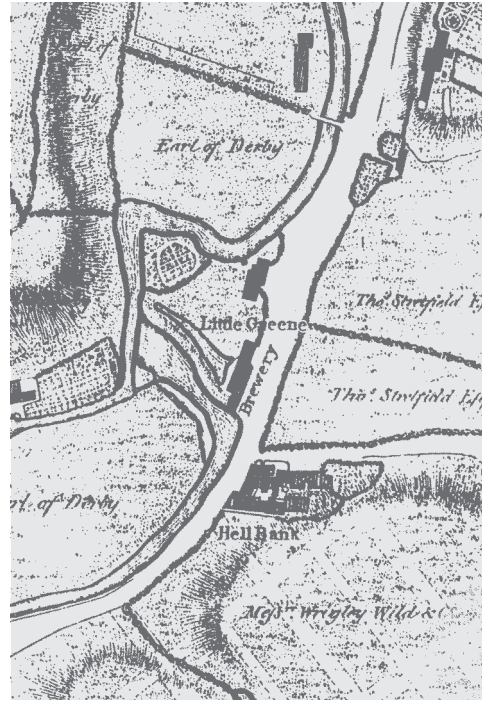
# Our Heritage

'Little Greene' was the name of a tiny 18th-century hamlet just to the east of Manchester, England, which can be seen on ancient maps of the area (including the one on all our paint tins).

Records dating from 1773 show a small company operating on the bank of the rivers Irk and Irwell, called The Little Greene Dye Works. Here, its entrepreneurial owner, Joshua Rowlands oversaw the supply of pigments and dyes to local weaving mills as the area was central to the boom in the cotton trade during the Industrial Revolution.

The Little Greene Paint Company was established very close to this original site and has seamlessly adopted Joshua Rowlands' business of formulating colour and the philosophy of doing so without compromise.

Our headquarters are located a little further down the road, standing proudly in the heart of an area with a rich and envied manufacturing pedigree...



## A Manufacturing Pedigree

The fundamental principles of formulating and making paints have not changed much since the era of The Little Greene Dye Works.

We still manufacture on a scale that's small enough to measure ingredients in kilograms not tonnes, and much of the process is undertaken by the hands of time-served craftspeople rather than automated machines, right down to our sample pots, which are filled by hand from a glass jug.

Our paints are made without compromise. We deliver products of a consistently high quality, something homeowners, interior designers and professional decorators value and repeatedly endorse.

Our premium quality recipes and highly pigmented formulations mean our paints have excellent opacity and unrivalled coverage, making them practical, beautiful and very economical too.

## Paints that Don't Cost the Earth

Little Greene's environmentally-friendly paints and wallpapers are amongst the highest quality available. We insist on using only the finest natural, organic and safe synthetic pigments, giving superb depth of colour, high covering power and the long life expected from modern paints.

- Water-based paints which far exceed all legislation on VOCs
- Greater coverage means fewer resources used
- The paper used in our wallpapers comes from FSC or PEFC certificated sustainable forests and the pigments used to print them are non-toxic
- Recycling – our packaging, including the metal cans, contains recycled materials and can be recycled again upon disposal



## Child-Safe

Our paints are completely safe to use in all areas of the home as they don't contain any dangerous ingredients.

Intelligent Matt Emulsion is the ideal choice for the walls of children's bedrooms, nurseries and playrooms, while Intelligent Satin, Intelligent Eggshell or Intelligent Gloss can be used with confidence on children's toys and furniture, including cots.



# Colours with a Story to Tell



Little Greene paint colours are steeped in history.

With unrivalled access to some of Britain's most-treasured and best-preserved properties, we have identified hundreds of historic colours; some muted (in keeping with the limited pigments available at the time they were first formulated) and others surprisingly bright, considering their era.

The result is an incredibly versatile, timeless palette. Our 'Colours of England' card is the only one on which you will see a genuine 1970s orange alongside an authentic Georgian grey and a true 1930s pale blue.

A cross section of a paint chip containing around 35 paint layers taken from a shop front in London. The oldest layer at the bottom is dated at 1874, the top at 2002.

Analysis allows us to understand the composition of the original colours, but also to determine the ingredients in each layer and therefore the approximate application date of each coat.



A closer look at our colours will reveal the elegant shade of Handel's front door, the 'disappearing' green used by 18th century landscape designer Humphry Repton, the colour of the Book Room at Wimpole Hall and the soft plaster-like shade taken from a reading of the sculptural stonework which surrounds the great stairwell at Penrhyn Castle in North Wales, amongst many more...

1.  Upper Wall: Book Room Green™ 322.

 Lower Wall & Dado Rail: Sage Green™ 80.



2. Swing: Harley Green™ 312.



3. Wall: Invisible Green™ 56.

A red icon, citing the period in which many of the colours were first used, identifies their origin and each shade is accompanied by a description on the reverse of the colour card.

#### Colour card Period Key

G Georgian R Regency V Victorian E Edwardian

30 1930s 50 1950s 60 1960s 70 1970s



# Choosing Colour

Choosing colour is a process that begins with our colour cards.

The Little Greene paint collections are designed to make choosing individual shades and combinations as easy as possible.



By simply folding the card away from the unique 'flying' colour chips, you can compare these shades directly against existing wallpapers, fabrics, tiles, painted walls and any other coordinating elements.

For total colour accuracy, all Little Greene colour cards are made using our Absolute Flat Emulsion paint, straight from the tin. These are not colour-matched inks or printed imitations of colour, so will react to varying lighting conditions in exactly the same way as your finished walls.

## Sample Pots

Testing actual paint in situ is an essential part of the colour choosing process.

Each of our shades can be bought in a tester pot.

Many site-specific factors will affect the way colours appear, so it's a good idea to test in more than one location, applying two coats over as large an area as you can.

Observe the colours in daylight and artificial light; the difference can be quite significant.

Avoid positioning small swatches of several colours immediately next to one another – each will affect the way the others read. Also, try to avoid comparing the swatch to bright white – this can be equally misleading.





## Little Book of Colour

For a hands-on introduction to combining paint colours, we have published 'The Little Book of Colour'.

Described as "an interior designer in your pocket", every shade has a dedicated page and a selection of eight colours to consider using with it, including whites, neutrals, darker tones and a contrasting accent.

These proven combinations will help to create your own sophisticated, harmonious colour schemes.



## Fandecks

A handy pair of fandecks representing each of the colour cards, offering medium-format swatches of the full Little Greene colour offer.

The hinged pages make it very easy to compare similar shades and select perfect combinations quickly and directly.

## Colour Album



A bound folder containing larger samples of each of our colours. Our colour album is an essential tool for Interior designers and home decorators alike.

Order them at your Little Greene stockist or online.



## Colour Consultancy

Little Greene consultants working from the showrooms use our colours every day and will guide you through choosing the best combinations, finishes and wallpapers to bring beauty and personality to your home.



# Choosing Finishes

With a 'barely there' low-sheen level of just 2%, Absolute Flat Emulsion provides a sublime chalky finish, often referred to as 'dead matte' or 'flat matte' paint. It dries to an incredibly flat finish that exudes character.

Absolute Flat Emulsion is wipeable with a damp cloth or sponge making it practical for the modern home too.

Containing zero added VOCs, it is kind to the environment, pet-friendly and child-safe paint making it completely safe to use in children's rooms, and a very smart choice for the family home.

Little Greene Intelligent Paints offer an unrivalled combination of strength and beauty.

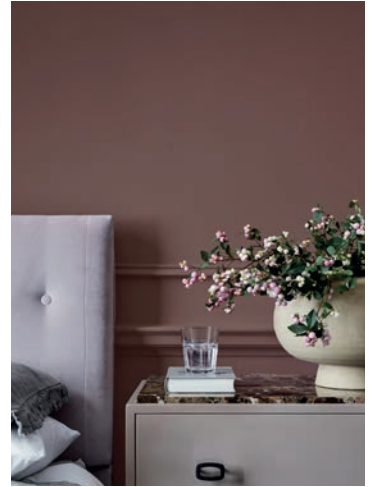
The smarter choice for both your home and your family, these breakthrough paints are child-safe and environmentally-friendly.

Quick and easy to apply, they are completely washable, without compromise to our hallmark flatness and depth of colour.

They can be used with utmost confidence on most surfaces, including plaster, woodwork, radiators and even outside.

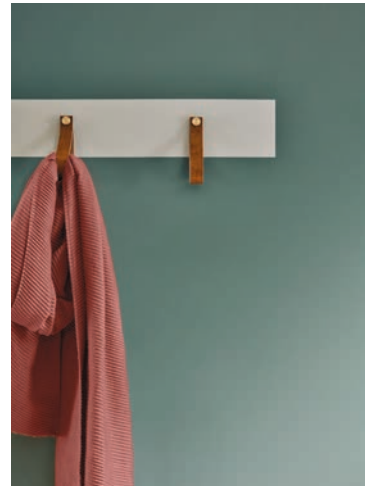
All Intelligent Paints are:

- Water-based
- Fully washable
- Extremely tough
- Certified child-safe
- Environmentally-friendly
- Long lasting
- Dry in 2-4 hours
- Suitable for brush or roller application
- 'Multi-surface' paints – can be used on walls, woodwork & radiators



## Absolute Flat Emulsion

Renowned for being very matte and chalky with ultimate flatness, a result of the high pigmentation and quality materials used. Ideal for general usage in bedrooms, living rooms and studies or where a classic, very flat matte finish is desired. This is the paint you will find in our sample pots.



## Intelligent Matt Emulsion

A totally matte, yet completely washable alternative to traditional emulsion paint. Perfect for busy family homes, hallways, kitchens and kids' rooms.



### Intelligent Eggshell

An elegant, low-sheen finish, particularly recommended for woodwork and walls where complete scrubbability is desired.



### Intelligent Gloss

A quick-drying finish with a high gloss, for interior and exterior trim and even front doors.



### Intelligent Exterior Eggshell

A highly flexible low-sheen finish for all exterior woodwork and joinery.



### Intelligent Satin

An ultra-tough, low-maintenance, satin finish suitable for all interior woodwork, in particular, all household joinery, baseboards, doors and windows as well as kitchen cabinets and wooden furniture.



### Intelligent Floor Paint

This revolutionary, quick-drying paint is specifically formulated for wooden and concrete floors. Easy to apply and, unlike oil-based alternatives, low in odour and dry within four hours.



### Intelligent ASP

Our revolutionary water-based 'All Surface' Primer Undercoat is capable of preparing just about every surface for painting, including wood, metal, melamine and many plastics in both interior and exterior locations.



## Absolute Flat Emulsion

water-based

Choose this paint if you want the most beautiful, chalky, matte finish on your walls and ceilings.

- Suitable for many surfaces including walls, ceilings, plaster and lining paper
- Suitable for use over Lime Plaster
- Dry in 2–4 hours
- Available in all colours
- Virtually odourless in application
- Sample pots available
- Child-safe formulation
- Wipeable
- Environmentally-friendly
- Available in 1 gallon and quart tins, plus 60ml sample pots

## Intelligent Matt Emulsion

water-based

A hard-wearing, quick-drying, washable finish designed for walls in high traffic areas – hallways, kitchens, kids' rooms and open-plan spaces.

- Multi-surface use including walls
- Dry in 2–4 hours
- Available in all colours
- 15 times tougher than ordinary matte emulsion paints
- Child-safe formulation
- Fully washable
- Stain resistant
- Virtually odourless in application
- Environmentally-friendly
- Available in 1 gallon and quart tins

Technical Information	Coverage ft <sup>2</sup> /gal.	Gloss Level (approx.)	Cleaning	VOC
Absolute Flat Emulsion	570	Dead Matte (2%)	Wipeable	Less than 0.1%
Intelligent Matt Emulsion	570	Matte (4%)	Fully washable	Less than 0.1%

1.

Cornicing: Ferdinand™ 313.

Upper Wall: Castell Pink™ 314.

Lower Wall: Nether Red™ 315.

# Intelligent Eggshell

water-based

Use this quick-drying, low sheen finish on all interior woodwork and walls in the splash zone or where condensation may occur.

An easy to use, quick-drying finish with a smart low sheen that can be used on all interior trim.

- Multi-surface use including walls, woodwork and metals e.g. radiators and pipework
- Dry in 2–4 hours
- Available in all colours
- Virtually odourless in application
- Fully washable
- Environmentally-friendly
- Available in 1 gallon and quart tins



# Intelligent Satin

water-based

An ultra-tough, low-maintenance, satin-finish suitable for all interior woodwork, in particular, all household joinery, baseboards, doors and windows as well as kitchen cabinets and wooden furniture.

- Multi-surface use including interior woodwork, kitchen cabinets and furniture (such as chairs, tables, wardrobes and trim as well as walls where a satin finish is desired). Also suitable for metals
- Virtually odourless in application and dry in 2 hours
- Available in all colours
- Fully washable
- Environmentally-friendly
- Child-safe
- Very durable
- Low-sheen of 30–35%
- Available in 1 gallon and quart tins

Technical Information	Coverage ft <sup>2</sup> /gal.	Gloss Level (approx.)	Cleaning	VOC
Intelligent Eggshell	570	Low Sheen (15%)	Fully washable	Less than 0.6%
Intelligent Satin	488	Mid Sheen (35%)	Fully washable	Less than 1.0%

- 2. Wall, Peg Rails & Unit: Pleat™ 280.
- 3. Wall: Apple™ 137.
- Wall Unit & Tiles: Bone China Blue - Deep™ 184.
- Lower Units: Drummond™ 16.
- Floor: Dock Blue™ 252.



# Intelligent Gloss

## water-based

Choose this finish instead of Intelligent Eggshell or Intelligent Satin if you prefer the extra contrast of a glossier finish.

- Multi-surface use including woodwork, plaster walls and metals
- Dry in 2–4 hours
- Available in all colours
- Virtually odourless in application
- Fully washable
- Environmentally-friendly
- Available in quart tins

1. Woodwork & Walls: Linen Wash™ 33.
2. Woodwork: Shallows™ 223.  
Trim: Jack Black™ 119.  
Door Inset: Smalt™ 255.  
Floor: Air Force Blue™ 260.

# Intelligent Floor Paint

## water-based

This revolutionary, quick-drying paint is specifically formulated for wooden and concrete floors. Easy to apply and, unlike oil-based alternatives, low in odour and dry within four hours, Intelligent Floor Paint is exceptionally durable and has a sophisticated, easy-to-clean 30–40% sheen.

- Multi-surface use including interior wood, concrete and metal floors
- Quick-drying, surface dry within 2 hours
- Safe to walk upon after overnight curing
- Low odour
- Available in almost all colours
- Easy to apply
- Fully washable
- Durable low-sheen finish of 30–40%
- Available in 1 gallon tins



Technical Information	Coverage ft <sup>2</sup> /gal.	Gloss Level (approx.)	Cleaning	VOC
Intelligent Gloss	570	High Sheen (80%)	Fully washable	Less than 2.0%
Intelligent Floor Paint	529	Mid Sheen (35%)	Fully washable	Less than 4.0%

# Exteriors

Little Greene colours are also available in exterior finishes, meaning you can completely coordinate the outside of your home with the things around it, be they sprawling gardens, adjoining properties, natural architectural materials or pot-plants in the yard.

## Intelligent Masonry Paint

**water-based**

Use Intelligent Masonry Paint to bring beautiful colour to any exterior brick, stone or rendered wall.

- Multi-surface use including exterior brickwork, stone and render
- Dry in 2–4 hours
- Available in almost all colours
- 15 year protection guarantee\*
- Inhibits mould and algal growth
- Completely weather resistant
- Environmentally-friendly
- Available in 1 gallon tins

\* Providing proper preparation takes place, it is applied correctly and the coating is maintained.

## Intelligent Exterior Eggshell

**water-based**

Use this superb quick drying finish on any exterior joinery, it needs no separate primer on bare wood.

- Multi-surface use including all exterior woodwork
- Surface dry in 2–4 hours
- Re-coat in 16 hours
- Virtually odourless in application
- Available in all colours
- Extremely durable, flexible finish
- Self-priming on new and bare wood
- Can also be used on suitably primed metalwork
- Inhibits mould and algal growth
- Weather resistant and fully washable
- Low sheen (15%)
- Available in 1 gallon tins



3.

3.

Wall: Green Stone - Light™ 269.

Door: Pea Green™ 91.

Technical Information	Coverage ft <sup>2</sup> /gal.	Gloss Level (approx.)	Cleaning	VOC
Intelligent Masonry Paint	529	Matte (5%)	Washable	Less than 0.1%
Intelligent Exterior Eggshell	488	Low Sheen (15%)	Fully washable	Less than 4.0%



## Preparing Woodwork

Seal knots in softwood and all resinous hardwood then prime the wood all over with one full coat of Intelligent ASP before applying the finish coat of your choice.

When painting sealed or previously painted woodwork in good condition, one coat of Intelligent ASP should then be followed with two coats of your chosen finish.

## Preparing Walls

Check for any cracks, screw holes, seams and imperfections and use spackling paste where needed. Where the wall has been repaired, sand them down so that when the area is painted you achieve a seamless finish.

Once this is complete, sand all areas very lightly so they're completely ready for painting, then remove all dust and debris from the walls using a damp cloth and vacuum the area.



## Preparing Metalwork

Previously primed/painted metalwork in good condition can be painted without further priming. It is good practice to rub down the surface lightly to create a key for the topcoats to adhere to.

If you're painting a new radiator (usually supplied pre-primed or powder-coated), apply one coat of Intelligent ASP before finishing with two coats of Intelligent Eggshell, Intelligent Satin or Intelligent Gloss. This will help with both the durability and colour depth of the finish.



# Primer

## Intelligent ASP

(All Surface Primer)

water-based

- Use as a primer on all wood, metal and most building plastics including PVCu frames and doors
- Quick-drying, dry in 1 hour
- Recoatable in 3–4 hours
- Low VOC – virtually odourless in application
- Available in the full range of Little Greene colours to complement your chosen topcoat
- Child-safe
- Environmentally-friendly
- Robust and durable
- Low sheen of 5–8%
- Available in 1 gallon and quart tins



\*Coloured primers are intentionally tinted to a near-match to assist with over-painting.

Technical Information	Coverage ft <sup>2</sup> /gal.	Gloss Level (approx.)	VOC
Intelligent ASP	529	Matte (6%)	Less than 2.5%

# Usage Guidelines

	Absolute Flat Emulsion	Intelligent Matt Emulsion (All Surface)	Intelligent Eggshell (All Surface)	Intelligent Satin (All Surface)	Intelligent Gloss (All Surface)	Intelligent Floor Paint (All Surface)	Intelligent Masonry Paint (All Surface)	Intelligent Exterior Eggshell (All Surface)	Intelligent ASP
	●	●	●	●	●	●	●	●	●

Interiors									
Walls (General)	●	●	●	●	●				●
Walls (Kitchens & Bathrooms)		●	●	●	●				●
Ceilings	●	●	●	●	●				●
Woodwork & Trim		●	●	●	●				●
Metalwork (primed)		●	●	●	●				●
Floors						●			
Exteriors									
Masonry		●					●		
Woodwork					●			●	●
Applications									
Brush	●	●	●	●	●	●	●	●	●
Foam Roller		●	●	●	●	●		●	●
Short Pile Roller		●	●	●	●	●			●
Sheepskin Roller	●	●					●		
Availability									
1 Gallon	●	●	●	●		●	○	●	●
Quart	●	●	●	●	●				●
60ml	●								
Self Priming		✓	✓	✓	✓	✓	✓	✓	✓
Coverage ft <sup>2</sup> /gal	570	570	570	488	570	529	529	488	529
Gloss %	2	4	15	35	80	35	5	15	6
VOC %	0.1	0.1	0.6	1.0	2.0	4.0	0.1	4.0	2.5

VOC content determined as a percentage in the colour 'Slaked Lime' in each case

- = Highly Recommended
- = All colours available in this size
- = Eco-friendly finish, water-based
- = Recommended
- = Dark colours are limited in this size

# Wallpaper

FINE PAINTS & PAPERS  
IN ASSOCIATION WITH



National  
Trust

# Papers with a Story to Tell

Just like our paint colours, Little Greene wallpapers are steeped in history. We uncover the most beautiful designs from the past and redraw them, injecting subtle combinations of Little Greene's best-loved colours. A variety of print processes are used to create an eclectic, yet easy-to-use, range of papers that seamlessly transcends old and new.



## Little Greene and The National Trust

With a shared commitment to finding and preserving the most important colours and patterns of the last 300 years, Little Greene has collaborated with The National Trust, a charity devoted to looking after over 500 historic sites, houses and properties throughout England, Wales and Northern Ireland. Little Greene contributes a minimum of \$30,000 per year in support of the National Trust's important work to look after these special spaces for everyone, for ever.

## Inspired by Historic Archives

Every roll of wallpaper we make has been drawn from a historic pattern we have found. Some were originally hand-printed pieces, discovered as fragments behind layers of wallpapers in prestigious period homes. Most documents are preserved in the nation's archives.

In each case, we diligently recreate the pattern, sometimes maintaining the scale and detail of the original, sometimes modifying or removing elements to improve or modernise the design. Little Greene colourists then work with our renowned colour palette to create a range of papers that unite historic provenance and contemporary detailing.

-   
1. Wallpaper: 'Beech Nut - Córdoba' from National Trust Papers II
  -   
2. Wallpaper: 'Beech Nut - Florence' from National Trust Papers II
-   
Door: Tea with Florence™ 310.



An authentic, late Georgian design, this paper was uncovered at Oxburgh Hall in Norfolk.




# Colour Matched Papers

All Little Greene wallpapers are produced in colourways that beautifully coordinate with our paints.

From soft off-whites and stronger complementary neutrals, to much bolder shades and contrasting highlight colours, these suggestions for ceilings, adjacent walls, woodwork, floors and furniture can be used with confidence to bring beauty and integrity to the scheme.



3.  Wallpaper: 'Upper Brook St. – Matin' National Trust III

 Panelling: Pleat™ 280.

4.  Wallpaper: 'Burgess Snail – Juniper' from National Trust Papers II

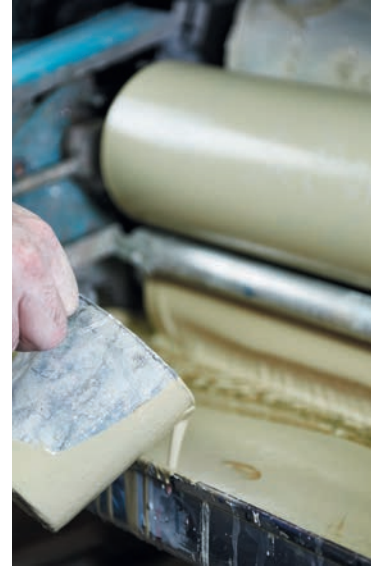
 Ceiling: Loft White™ 222.

 Wall: Juniper Ash® 115.



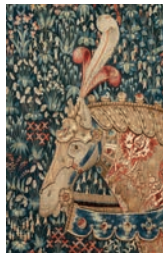
# 300 Years of Wallpaper Production

Little Greene wallpapers are manufactured in a range of traditional and modern print techniques, each chosen to best serve the reproduction, scale, surface quality and gravitas of the individual pattern. Some of our production methods haven't changed in hundreds of years. First commissioned in the 1830s, the machine used to surface-print many of our papers is capable of placing up to twelve colours over a variety of grounds. These include matte, mica and metallics, bringing a contemporary, subtle interplay of light to a historic pattern.



## Early Wallcoverings

The predecessors to wallpapers – as we know them today – were not made of paper and were the bespoke work of artists and craftspeople, rather than conventional printers. The homes of pre-18th century nobility and gentry would use embossed leather hangings and intricate, hand-woven tapestries to decorate walls of their most important rooms. Originally created to document stories, ideas and aspirations, these designs would use great artistic skill to narrate a significant historical event, or describe a philosophy or aesthetic that was pertinent to a cultural or religious stance of the time.



### Archive Fragment

The floral detail in this design is drawn directly from an incredibly rare, important and lovingly-conserved object.



1.

Wallpaper: 'Dahlia Scroll – Giallo'  
from National Trust Papers III

2.

Wallpaper: 'Millefleur – Knight'  
from National Trust Papers II

# National Trust Papers

Little Greene's 'National Trust Papers' is an eclectic collection of contemporary wallpapers based on original designs and includes some of the most historically significant houses across England, Wales and Northern Ireland. Comprising 40 colourways over seven designs, the book represents 200 years of timeless pattern, from the early 18th to the 20th century. Each paper has been recreated from original fragments found in historic properties; on bedroom walls, in archive drawers and even preserved rolls in an attic. The collection uses a series of manufacturing techniques including traditional methods of surface printing, dating back to the industrial revolution, as well as surflex prints and modern digital techniques, which allow for the printing of large scale designs without the normal limitations of repeating pattern.



FINE PAINTS & PAPERS  
IN ASSOCIATION WITH



National  
Trust





4.  Wallpaper: 'Pavona - Maeve'  
from National Trust Papers

5.  Wallpaper: 'Stag Trail - Sky'  
from National Trust Papers

 Baseboard: Pale Wedgwood™ 249.

**1875** 'Pavona' This flamboyant, vibrant peacock design is a beautiful example of late-19th century wallpaper printing. Found on a lobby wall at Erddig in Wales, it was hung in the 1870s, and has the painterly finish of a traditional Chinese silk. Showing peacocks perched on branches, accessorised by flowers, leaves and birds, the subject is typical of wallpapers and fabrics produced to satisfy the British interest in Chinese design.



1.  Wallpaper: 'Clutterbuck – Lodge' from National Trust Papers  
 Ceiling: Wood Ash™ 229.  
 Framing & Lower Wall: Hopper™ 297.
2.  Wallpaper: 'Belton Scenic – Sunbeam' from National Trust Papers

1805 'Clutterbuck' Found at Newark Park, a Tudor property sitting on top of the Cotswold escarpment, this small floral leaf design is thought to have been produced to match a paper from the clock tower at Hampton Court Palace in the early 19th century. This simplistic two-colour design featured two varying shades of green on a white satin background, providing the illusion of fabric.



3. Wallpaper: 'Pomegranate – Bazaar'  
from National Trust Papers
- Woodwork: Portland Stone™ 77.
- Units: Citrine™ 71.
4. Wallpaper: 'Hencroft – Azure'  
from National Trust Papers
- Dado Rail: Air Force Blue™ 260.
- Panelling: Harley Green™ 312.
5. Wallpaper: 'Achillea – Aurora'  
from National Trust Papers
- Bath: Harley Green™ 312.
- Bath Base: Canton™ 94.
- Baseboard: Goblin™ 311.



# National Trust Papers II

'National Trust Papers II' brings another seven historic wallpaper designs back to life; resplendent in contemporary colours whilst respectfully acknowledging the traditional methods and materials by which they were originally crafted.

Design elements are taken from Georgian and Victorian block-printed papers, but also from older and more unusual decoration, including a leather wall-hanging and a 15th-century tapestry. The contemporary interpretation of each makes this a truly timeless collection of papers for homes of all architectural styles.



1. Wallpaper: 'Beech Nut – Córdoba' from National Trust Papers II
2. Wallpaper: 'Massingberd Blossom – Verdier' from National Trust Papers II

1782 'Beech Nut' An authentic, late Georgian design, this paper was uncovered at Oxburgh Hall in Norfolk. Originally used within a brightly-coloured, flocked, floral border, the leaf and nut element was block-printed in a rather more subdued grey colourway.



#### Archive Fragment

This tree of life design is drawn directly from the leather wallcoverings in the dining room at Bateman's, a Jacobean mansion in East Sussex.



3. Wallpaper: 'Burgess Snail – Rosie' from National Trust Papers II



4. Wallpaper: 'Mandalay – Ceviche' from National Trust Papers II

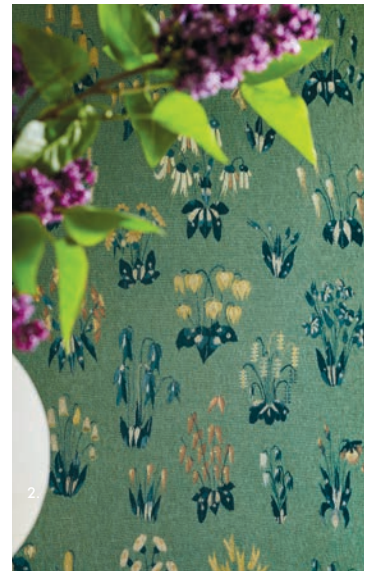
1712 'Mandalay' This tree of life design is drawn directly from the leather wallcoverings in the dining room at Bateman's, a Jacobean mansion in East Sussex. Elaborate designs such as these were inspired by 17th-century Indian chintzes, which often depicted sinuous flowering trees with birds among their branches.



1.

Wallpaper: 'Tulip – Theatre'  
from National Trust Papers II

Woodwork: Theatre Red™ 192.



2.

Wallpaper: 'Millefleur – Garden'  
from National Trust Papers II



3.

Wallpaper: 'Moy – Pompei'  
from National Trust Papers II





1898 'Tulip' Considered to be one of Britain's finest country houses, Erddig, just outside Wrexham in North Wales, is home to an abundant collection of wallpapers. This pattern of scrolling foliage is unusual in its execution; the graded colour which gives life and depth to the leaves was, even in 1898, a contemporary evolution of the traditional, flat damask design.

# National Trust Papers III

'National Trust Papers III' is an authentic collection of eight historic wallpaper designs, adapted and recoloured for use within the modern interior. Comprising 45 colourways, this collection represents over 200 years of decoration. Working in collaboration with Europe's largest conservation charity, each design has been created from original source material found at three historic houses; Oxburgh Hall and Felbrigg Hall in Norfolk and Newark Park in Gloucestershire, with the addition of one design that has been recoloured and revived from the Little Greene archive.

Employing traditional methods of printing that have remained unchanged for over 100 years, the collection comprises an array of hand-painted birds, stylised florals, scrolling trails as well as a traditional 'Toile de Jouy'.



- 3.  Wallpaper: 'Upper Brook St. - Soleil' from National Trust Papers III
-  Baseboard: Puck™ 298.
- 4.  Wallpaper: 'Volières - French Grey' from National Trust Papers III
-  Panelling: French Grey - Pale™ 161.
-  Wall & Dado Rail: French Grey™ 113.
- 5.  Wallpaper: 'Hoja - Air Force Blue' from National Trust Papers III
-  Cupboard: Shirting® 129.

1920 'Upper Brook St.' The Kniphophia flowers featured in this design were recorded as having been hand painted and stuck over a pre-hung wallcovering in a late-18th century Upper Brook Street house.



1. Wallpaper: 'Briar Rose – Green Verditer' from National Trust Papers III

Ceiling & Baseboard: Mid Azure Green™ 96.





2. Wallpaper: 'Bird & Bluebell – Pea Green' from National Trust Papers III

Ceiling: Dorchester Pink® 213.

Baseboard: Puck™ 298.

1830–1870 'Bird & Bluebell' This elegant mural, (10'8" x 61.5") featuring birds, bees and bluebells has been created from remaining fragments of wallpaper found at Felbrigg Hall in Norfolk.



- 3.  Wallpaper: 'Lovers' Taile – Puck from National Trust Papers III  
 Woodwork & Dado Rail: Puck™ 298.
- 4.  Wallpaper: 'Dahlia Scroll – Giallo' from National Trust Papers III
- 5.  Wallpaper: 'Poppy Trail – Masquerade' from National Trust Papers III  
 Panelling & Dado Rail: Yellow-Pink™ 46.

1890–1900 'Poppy Trail' This flamboyant floral design featuring large, stylised poppies is a classic example of those in production during the late 19th century. Although the designer is unknown, it is thought that it may have been the work of Arthur L. Gwain who produced papers of a very similar feel.

# Index by Collection

## National Trust Papers

Achillea 0245ACAUROR



0245ACBRUME 0245ACDEWZZ



0245ACNIGHT 0245ACTWILI

## National Trust Papers

Belton Scenic 0245BSSUNBE



0245BSOYSTE



0245BSPAVIL

## National Trust Papers

Clutterbuck 0245CCLODGE



0245CLBICEZ



0245CLCORIN



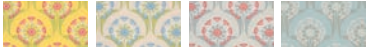
0245CLHESSI



0245CLPUCE

## National Trust Papers

Hencroft 0245HEAZURE



0245HEPUNCH 0245HEBLUEP 0245HEBONEC 0245HECELES



0245HELUTEZ 0245HEMAURI 0245SHPINKP

## National Trust Papers

Pavona 0245PAMAEVE



0245PABLANC



0245PAGINAZ



0245PAHAZEL



0245PAPEARL



0245PASKYEZ



0245PASYIVI



0245PAVIVIE

## National Trust Papers

Pomegranate 0245POBAZAA



0245POBLUES



0245POCITRO



0245POGREEN



0245POPASTE



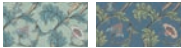
0245POPPOPH



0245POGREYS

## National Trust Papers

Stag Trail 0245STSKYZZ



0245STARSEN 0245STJUNIP



0245STSTERL



# Index by Collection

## National Trust Papers II

Beech Nut

0260BECORDO



0260BEDELIC



0260BEFLORE



0260BERUBIN



0260BESUMME



0260BEWARMZ

## National Trust Papers II

Burges Snail

0260BUROSIE



0260BUDARKZ



0260BUJUNIP



0260BULEMON



0260BUOCEAN



0260BUSILVE



0260BUTRAVE

## National Trust Papers II

Mandalay

0260MDARBOU



0260MDARCHI



0260MDCEVIC



0260MDPOLLE

## National Trust Papers II

Massingberd Blossom

0260MAVERDI



0260MADEEPZ



0260MAGREYZ



0260MAMINER



0260MAORIEN



0260MAPALEZ



0260MAYELLO

## National Trust Papers II

Millefleur

0260MFKNIGH



0260MFKHAMB



0260MFGARDE



0260MFMASQU

## National Trust Papers II

Moy

0260MOPOMPE



0260MOASHZ



0260MOBLUEZ



0260MOLIMEZ



0260MOMALLZ



0260MOPINKZ



0260MOREDOZ

## National Trust Papers II

Tulip

0260TUTHEAT



0260TUAGUAZ



0260TUBLUEZ



0260TUCLOUD



0260TUPALEZ



0260TUPOWDE



0260TUSUGAR

# Index by Collection

## National Trust Papers III

Bird & Bluebell

0263BIPEAGR



0263BICELES 0263BICEVIC



0263BICHINA

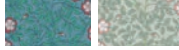
## National Trust Papers III

Briar Rose

0263BRGVERD



0263BRGMIST 0263BRGSTON 0263BRINDIA



0263BRMARIN 0263BRSALEX

## National Trust Papers III

Dahlia Scroll

0263DAGIALL



0263DACARMI 0263DAETRUR 0263DAFRENC

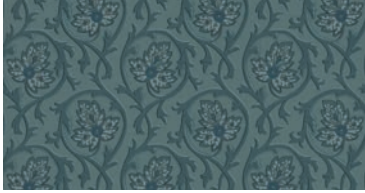


0263DAMIRRO 0263DAPEAGR 0263DATEAWI

## National Trust Papers III

Hoja

0263HOAIRFO



0263HOCOOOLA 0263HOGARDE 0263HOHELLE



0263HOPLEAT 0263HOPORTL

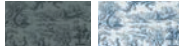
## National Trust Papers III

Lovers' Toile

0263LOPUCKZ



0263LOATIC 0263LOBLUSH 0263LODARKB

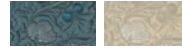


0263LOHICKS 0263LOMAZAR

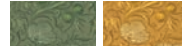
## National Trust Papers III

Poppy Trail

0263PTMASQU



0263PTAIRFO 0263PTPORTL



0263PTSAGEG 0263PTYELLO

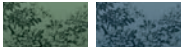
## National Trust Papers III

Upper Brook St.

0263UBSOLEI



0251UBMATIN 0251UBMIDIZ 0251UBMINUI



0251UBNIGHT 0263UBTWILI

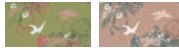
## National Trust Papers III

Volières

0263VOFRENC



0263VOCONF 0263VOETRUR



0263VOGARDE 0263VOMASQU

# Index

Design	Collection	Page	Price Band
Achillea	National Trust Papers	31, 32	F
Beech Nut	National Trust Papers II	20, 26, 33	D
Belton Scenic	National Trust Papers	30, 32	F
Bird & Bluebell	National Trust Papers III	24, 34	F
Briar Rose	National Trust Papers III	24, 34	E
Burges Snail	National Trust Papers II	21, 27, 33	B
Clutterbuck	National Trust Papers	30, 32	C
Dahlia Scroll	National Trust Papers III	22, 25, 34	C
Hencroft	National Trust Papers	31, 32	D
Hoja	National Trust Papers III	23, 34	B
Lovers' Toile	National Trust Papers III	25, 34	A
Mandalay	National Trust Papers II	27, 33	F
Massingberd Blossom	National Trust Papers II	3, 26, 33	D
Millefleur	National Trust Papers II	22, 28, 33	J
Moy	National Trust Papers II	28, 33	B
Pavona	National Trust Papers	29, 32	E
Pomegranate	National Trust Papers	31, 32	E
Poppy Trail	National Trust Papers III	19, 25, 34	D
Stag Trail	National Trust Papers	29, 32	D
Tulip	National Trust Papers II	28, 33	A
Upper Brook St.	National Trust Papers III	21, 23, 34	F
Volières	National Trust Papers III	23, 34	B

For more information on these wallpaper collections visit your nearest stockist or [littlegreene.us](http://littlegreene.us)

## Wallpaper Paste

Little Greene wallpapers are guaranteed only when hung using Little Greene Ready Mixed Wallpaper Paste. Its high-quality, starch-based formulation provides good initial tack and excellent slip, for precise positioning when hanging our high-grade base papers.

- Easy to use
- No mixing required
- 2.5kg and 5kg tubs
- 2.5kg will hang approximately 3 standard rolls.

©2023 The Little Greene Paint Company Limited.

All rights reserved – no colour name, colour reference, images or any other portion of this document may be reproduced in any form without written permission from The Little Greene Paint Company Limited. The Little Greene is a registered trademark. 'The National Trust' and the oak leaf device are registered trade marks of National Trust (Enterprises) Limited (a subsidiary of the National Trust for England, Wales and Northern Ireland) and The Little Greene Paint Company Limited is licensed to use those marks in connection with this product.



**The Little Greene Paint Company Limited**

The Coach Works, 420 Ashton Old Road, Manchester M11 2DT. England  
Little Greene Corporation  
9 East Putnam Avenue, Greenwich, CT. 06830.  
Tel: 1-888-516-6130  
Customer Service: [getintouch@littlegreene.us](mailto:getintouch@littlegreene.us)  
[www.littlegreene.us](http://www.littlegreene.us)

02998ROCH115

